



Head Start-Early Head Start

ANNUAL REPORT 2022-2023



Mission Statement

East Bay Community Action Program (EBCAP)

Head Start provides high quality comprehensive early childhood education services for eligible families and children from prenatal to age five. We partner with parents to teach children the skills and abilities needed for success in school and life. Together with our community, we support parents to keep children safe, healthy and well.

Guiding Principles

Guiding principles have been fundamental to the Head Start program from its inception. They underlie EBCAP policies and practices that prepare young children for success in school and beyond. (Adapted from the Head Start Early Learning Outcomes Framework: Ages Birth to Five, 2015.)

- Each child is unique and can succeed.
- Learning occurs within the context of relationships.
- Families are children's first and most important caregivers, teachers, and advocates.
- Children learn best when they are emotionally and physically safe and secure.
- Areas of development are integrated and children learn many concepts and skills at the same time.
- Teaching must be intentional and focused on how children learn and grow.
- Every child has diverse strengths rooted in their family's culture, background, language, and beliefs.

FROM OUR VICE PRESIDENT, *Linda Laliberte*

I am pleased to present the EBCAP Head Start 2022-2023 annual report. Since 1971, EBCAP has served Rhode Island's most at-risk children and families in both Head Start and Early Head Start (EHS) programs. In the aftermath of the COVID-19 pandemic, our employees and families continue to work together to provide a support system for our most vulnerable children. This year, EBCAP has provided Education, Health, Mental Health, Disabilities, Nutrition, and Social Services to a total number of 200* Head Start children and 66* EHS children and pregnant women living in the cities of East Providence, Newport and the towns of Barrington, Warren, Bristol, Tiverton, Little Compton, Portsmouth, Middletown and Jamestown. Average monthly enrollment for the year was less than the funded enrollment of 242 Head Start and 108 EHS seats.

**Head Start and Early Head Start Program Information Report (PIR) cumulative enrollment for the months , 9/1/22-8/31/23.*

The 2022 Rhode Island Kids Count Factbook <https://www.rikidscount.org/Data-Publications/RI-Kids-Count-Factbook> estimates in the EBCAP catchment area, over 1,800 children aged birth to three are living in poverty with only 3.7% of low income children receiving Early Head Start services, however this is higher than the state average of 3% of eligible children enrolled in Early Head Start, (Table 34). Seventy-two percent (72%) of this group live in East Providence and Newport. The Factbook also reports 12% of infants/toddlers in Rhode Island benefited from Early Intervention services in 2020 (Table 33). During the same period, **EBCAP provided support to 72 children identified as having a special need, 27% of its cumulative enrollment** (2022-2023 EBCAP Program Information Report) The Factbook also reports that over 1,200 low income three and four-year-old children live in the EBCAP catchment area with just under 64% of these children living in East Providence and Newport (Table 40). EBCAP provided services to just under 24% of the eligible 3 and 4 years olds in the east bay area (2021-2022 EBCAP Program Information Report and State Pre-K Report).

The COVID-19 pandemic continues to challenge our ability to fully enroll the program. Prior to the pandemic, EBCAP had successfully met its goal for full enrollment with a viable wait list. The 2022-2023 school year saw very little change in our ability to open additional classrooms. The dramatic change in the workforce and competing employment opportunities has affected the number of qualified applicants for posted positions. This is especially felt as Early Head Start teacher positions remain unfilled requiring EBCAP to withhold enrollment in its Newport infant/toddler classrooms. It has become more challenging to fill teacher and paraprofessional positions as we continue to compete with school systems and commercial markets paying higher hourly wages for the same workforce.

A shout out to educators and parents who work together daily to promote children's school readiness skills in the areas of motor/physical development; cognition; language/literacy and math skills; social/emotional development; and approaches to learning. We are delighted to report our employees and parents rose to the challenge and Spring 2023, child development assessments show the growth of all age groups with our most at risk groups of children making the largest gains. See pages 6-8 of this report.

All of our centers participate in the Rhode Island Bright Stars Quality Rating system with 4 out of 5 centers attaining a 4-STAR rating and our East Providence site located at 386 Willett Ave holds the highest Bright Stars award, a 5-STAR rating. EBCAP received a *Program Performance Summary Report* from Office of Head Start for the Focus Area 2 Review conducted in June 2023. The report states in part, "...it has been determined that your program meets the requirements of all applicable Head Start Program Performance Standards, laws [Improving Head Start for School Readiness Act of 2007], regulations and policy requirements."

We extend our sincere thanks to our staff, governing body, Policy Council, parents, agency leadership and community partners, you are all instrumental in supporting our early childhood education services to achieve these high quality marks. We thank our Head Start leaders who supported our accreditation with the National Head Start Association as a Program of Excellence. We also thank the Office of Head Start, Region I leadership who continue to provide support and guidance to all the programs in New England.



The Percentage of Eligible Children Enrolled in Early Head Start and Head Start/Pre-K

	Early Head Start	Head Start/Pre-K
Barrington	0%	13%
Bristol	0%	14%
East Providence	1%	32%
Jamestown*	0%	15%
Little Compton*	0%	0%
Middletown	2%	21%
Newport	4%	19%
Portsmouth	2%	14%
Tiverton	1%	18%
Warren	4%	51%
Rhode Island	3%	25%

The Percentage of Children Who Received Medical and Dental Exams*

	Early Head Start	Head Start
Health Insurance	100%	99%
Up-to-Date on Preventative and Primary Care	72.7%	70%
Up-to-date on Immunizations	66.7%	99%
**Continuous/ Accessible Dental Care	50%	39%
Up-to-date on Preventative Oral Care	16.6%	36%

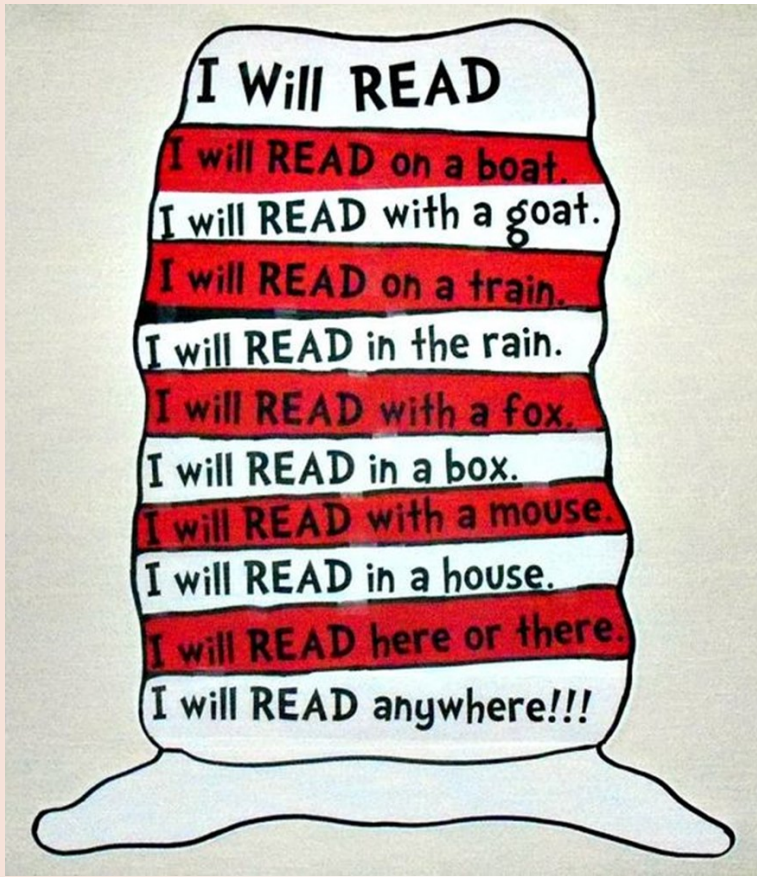
2023 Rhode Island Kids Count Factbook, Tables 33 & 39

* Community reports less than 10 low income children aged 3 & 4

*EBCAP Program Information Report 9/1/22-8/31/23

**Access to dental care has been disrupted by the pandemic. A program improvement goal has been established to review community dental services and support for families to access care.

School Readiness Goals



EBCAP provides high quality early childhood programming for children birth to five years old in several program options: full day preschool, extended day preschool and infant/toddler classrooms and home-based programs. Home-based services include weekly home visits and two group socialization experiences per month. Facilities are licensed and staffed by qualified early childhood professionals.

To ensure that children who participate in Head Start and Early Head Start are successful in future educational settings, EBCAP has adopted the following School Readiness Goals.

In 2019, the School Readiness Advisory Committee with the support and approval of the Policy Council, added two indicators to the language/literacy domain and added Math as a sixth domain to our school readiness goals.

1. PERCEPTUAL, PHYSICAL AND MOTOR DEVELOPMENT

Children will use senses to gather and understand information and respond to their environment.

2. COGNITION

Children will be able to connect ideas, develop logical and abstract thinking through curiosity and motivation.

3. LANGUAGE AND LITERACY

Children will be able to use receptive and expressive skills to communicate.

4. SOCIAL/EMOTIONAL DEVELOPMENT

Children will be able to express, manage, recognize and interpret their own emotions as well as respond appropriately to others' emotions.

5. APPROACHES TO LEARNING

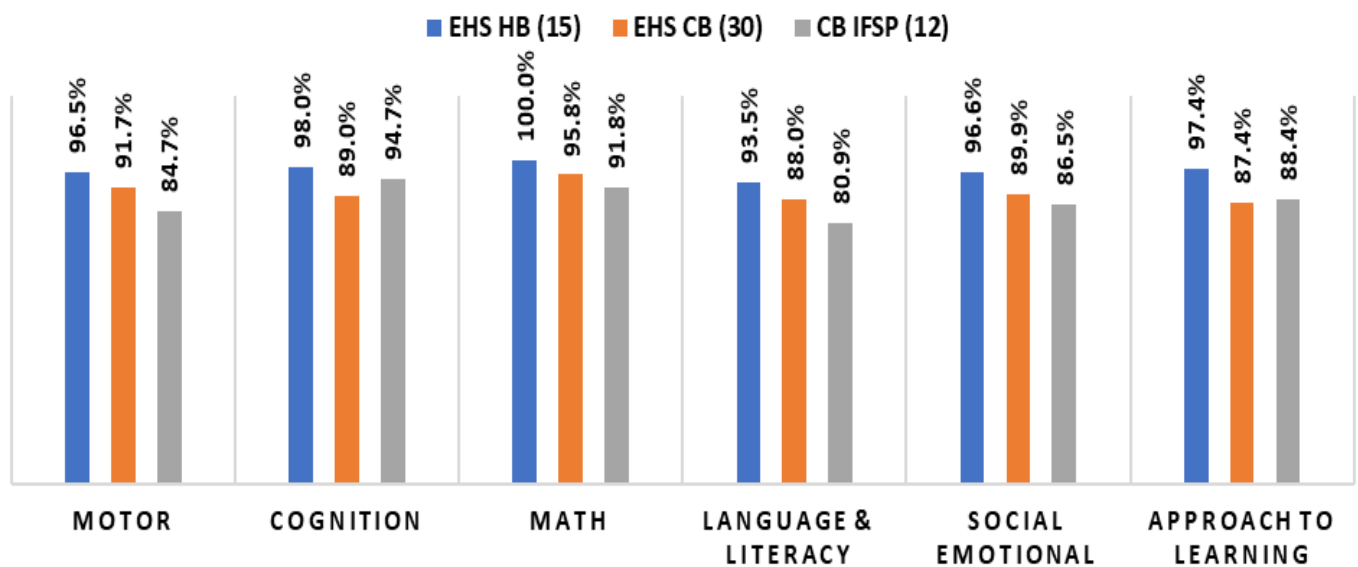
Children will possess skills to pay attention, control impulses and think flexibly.

6. MATH

Children will have the knowledge of basic math concepts and will be able to use them to solve everyday problems.

Data presented in the following graphs is based on Teaching Strategies GOLD child outcome measures. Numbers in the EHS group are based on spring data points, due to the small sample of children with a checkpoint in their age group in both the fall and spring, we are unable to compare gains of the two groups. Individual reports are shared with parents/guardians at each checkpoint during the year and teachers plan classroom activities for each child based on their developmental profile.

2022-2023 SPRING SCHOOL READINESS DATA-INFANT/TODDLERS PERCENTAGE OF CHILDREN WHO MEET OR EXCEED AGE EXPECTATIONS



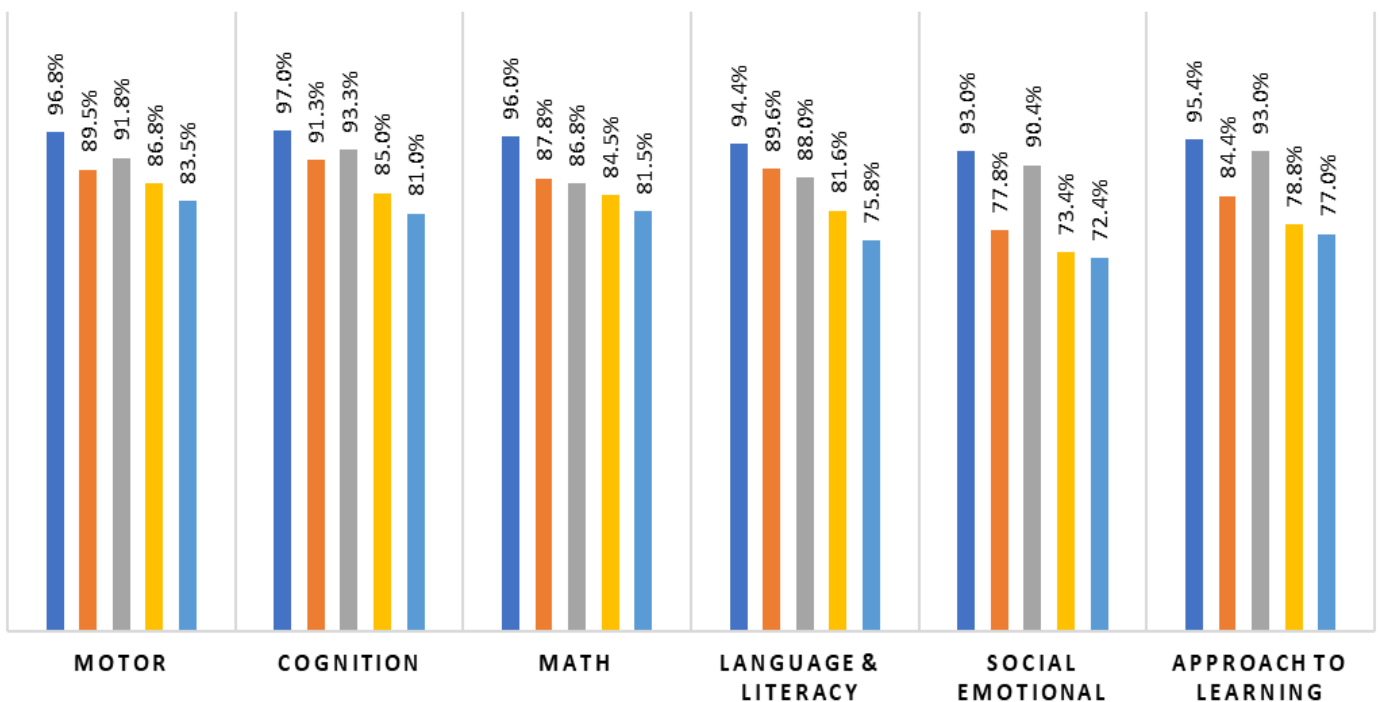
The graph below represents the Teaching Strategies GOLD (TSG) report for the spring checkpoint completed at the end of the 2022-2023 school year. To obtain a checkpoint, teachers conduct observations on each of the listed developmental domains. Using data based on these observations, teachers assign each child a “point” on the continuum of development indicated as below age expectations, meeting age expectations or exceeding age expectations. The spring report indicates the percentage of children who fall into each category.

The TSG checkpoint graph below identifies the children in five groups: Pre-K N= 97; Head Start 4 year olds N= 63; Head Start 3 year olds N= 82, children receiving Kids Connect services N=30 (a Medicaid supplemented program for children with a health, behavioral health or developmental need for support in the classroom) and children with an Individual Education Plan (IEP) N=50. In aggregate, children in the Pre-K group scored the highest in all domains and children receiving special education services (IEP) group scored the lowest in all domains at the end of the school year.

The graph on page 8 indicates the **gains** made by the children in each of the groups from fall 2022 to spring 2023. Children in all groups made impressive gains across the school year. Children receiving Kids Connect services made substantial gains in all areas most notably, gains made in motor skills, math, language & literacy and approach to learning exceeded the gains made by the Pre-K group. Data for children receiving special services was collected but not aggregated in the fall and winter so a growth comparison was not made for the 2022-2023 school year.

2022-2023 SPRING SCHOOL READINESS DATA- PRESCHOOL AGES PERCENTAGE OF CHILDREN WHO MEET OR EXCEED AGE EXPECTATIONS

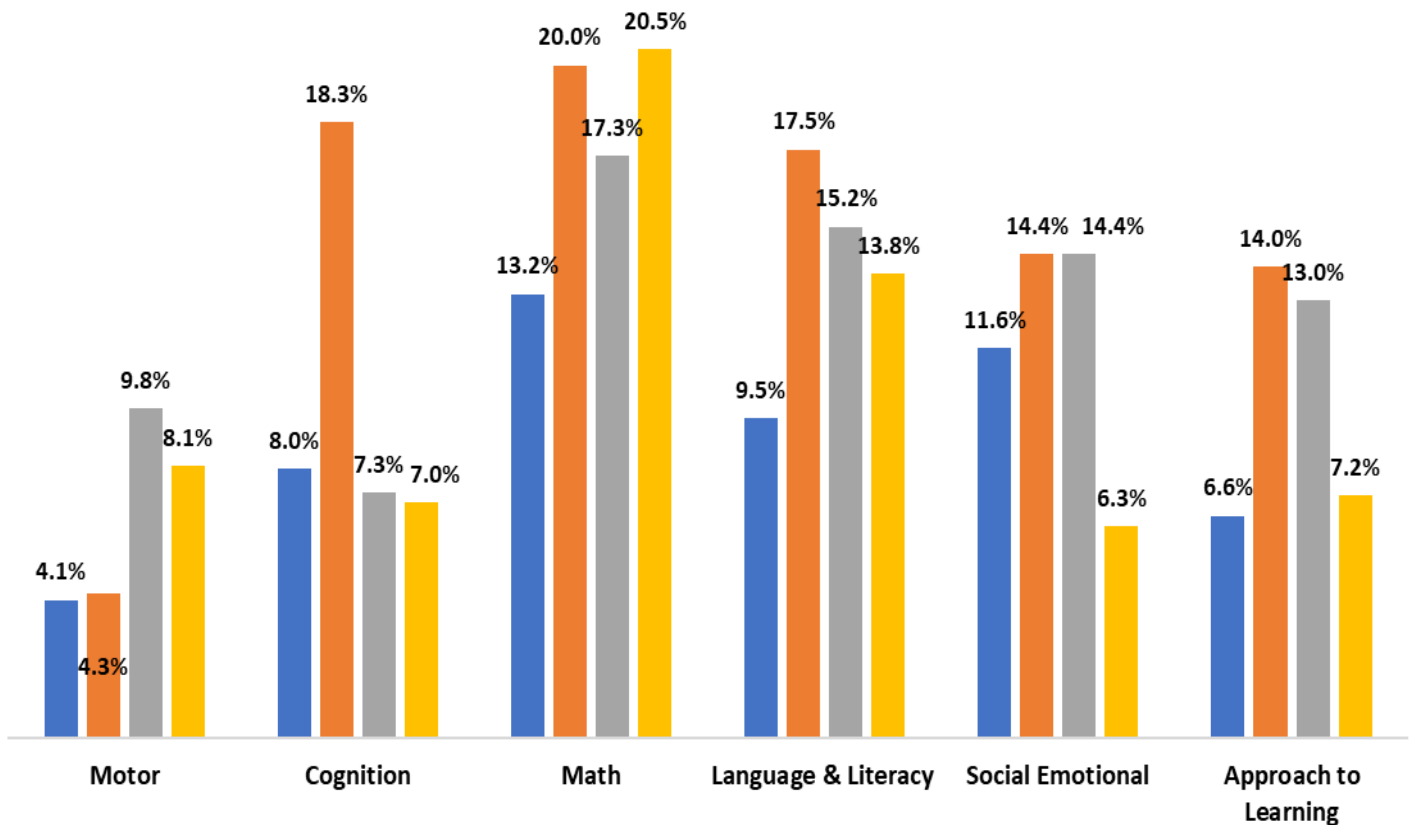
■ PreK (97) ■ HSCB 4-yr (63) ■ HSCB 3-yr (82) ■ KC (30) ■ IEP (50)





2022-2023 Fall to Spring Gains

■ PreK ■ HSCB 4-yr ■ HSCB 3-yr ■ KC



Financial Reports

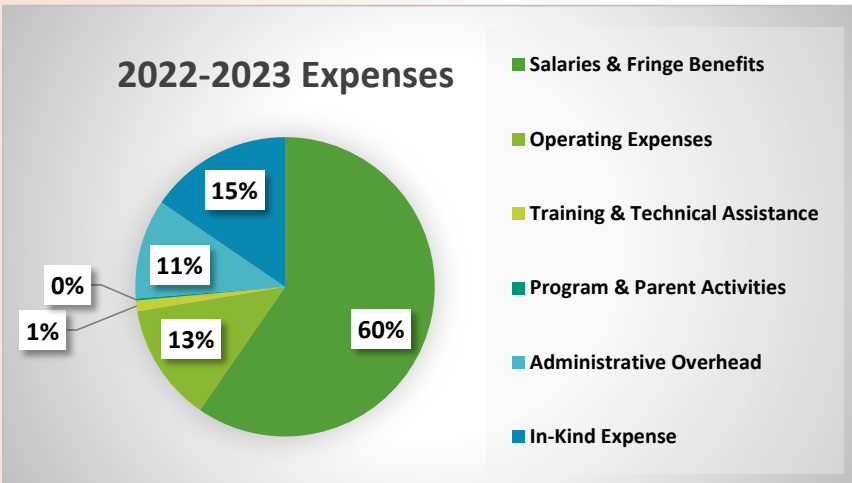
EBCAP received the following sources of revenue in the grant year February 1, 2022—January 31, 2023 for a total of \$7,452,164 to operate Head Start, Early Head Start and Child Care programs. Federal funds include a Cost of Living Allowance (COLA) in the amount of \$133,357 which supported a 3.5% salary increase for employees who have worked for the agency for 5 year or more and a 2.28% increase for all others. A carry-over balance of unobligated funds from the 2021-2022 grant year in the amount of \$688,471.90 was requested and funds were budgeted to support a 4% salary adjustment for all employees. Other expenses budgeted in the carry-over request include the pay-off of the mortgage for 8 John H Chafee Blvd., Newport facility, playground and building improvements/repairs and training and technical assistance to support a new training initiative to support interns to earn while they gain basic instruction and classroom experience to apply for entry level positions with EBCAP.

In-kind revenue of \$1,151,863 was generated and is the value of goods, services, property value, donations and volunteer time needed to support program operations. EBCAP requested and received a waiver in the amount of \$101,874 as we did not meet the required 20% match of federal funds.

A 14.8% federally approved indirect cost rate was submitted as an administrative expense.

Results of the annual audit was reported to the Policy Council and the Board of Directors as an unqualified opinion-clean report.

Federal Funds (spent)	\$ 4,863,731		
		EXPENSES	
State Funds	\$ 96,955		
Medicaid (Kids Connect)	\$ 424,385	Salaries & Fringe Benefits	4,442,955
USDA	\$ 199,033		
DHS Child Care/Parent Payment	\$ 680,382	Operating Expenses-supplies-facilities-travel-equipment-contracted services	950,273
Other grants, income, donations, E-Rate	\$ 35,815		
In-kind Revenue	\$ 1,151,863	Training & Technical Assistance	87,230
		Program & Parent Activities	15,630
		Administrative Overhead	804,213
		In-Kind Expense	1,151,863
		Expense Totals	7,452,164





Proposed budget for Grant Year 2023-2024

Revenue	
Federal/State/Private Grants	\$5,258,024
Program Income	\$2,149,095
Parent Payment /Donations/Misc. Income	\$52,723
Total Revenue	\$7,459,842
Expenses	
Salaries/Fringe/Contracted Services	\$5,581,807
Supplies	\$408,859
Facilities	\$386,667
Equipment	\$20,900
Training/Technical Assistance/Tuition	\$72,177
Travel	\$9,800
Parent Activities	\$6,100
General Administrative	\$973,533
Total Expenses	\$7,459,843

Proposed in-kind revenue and expenses for 2022-2023 is \$1,287,077

**Thank you to the members
of our 2022-2023 Policy Council**

Jessica Calabretta,
Chairperson
Parent

Melicia Swaby-Walker,
Vice Chairperson
Pre-K Community Representative

Jessica Medeiros,
Secretary
Parent

Kate DeCosta, Parent

Kelly White, Parent

Jessica Calvino,
EBCAP Board of Directors
Community Representative





East Bay Community Action Program

Head Start and Early Head Start

**For information about enrollment or employment opportunities,
visit www.ebcap.org**