



Head Start-Early Head Start

ANNUAL REPORT 2019-2020



Mission Statement

East Bay Community Action Program (EBCAP)

Head Start provides high quality comprehensive early childhood education services for eligible families and children from prenatal to age five. We partner with parents to teach children the skills and abilities needed for success in school and life. Together with our community, we support parents to keep children safe, healthy and well.

Guiding Principles

Guiding principles have been fundamental to the Head Start program from its inception. They underlie EBCAP policies and practices that prepare young children for success in school and beyond. (Adapted from the Head Start Early Learning Outcomes Framework: Ages Birth to Five, 2015.)

- Each child is unique and can succeed.
- Learning occurs within the context of relationships.
- Families are children's first and most important caregivers, teachers, and advocates.
- Children learn best when they are emotionally and physically safe and secure.
- Areas of development are integrated and children learn many concepts and skills at the same time.
- Teaching must be intentional and focused on how children learn and grow.
- Every child has diverse strengths rooted in their family's culture, background, language, and beliefs.

FROM OUR VICE PRESIDENT, *Linda Laliberte*

I am pleased to present the EBCAP Head Start 2019-2020 annual report. Since 1971, EBCAP has served Rhode Island's most at-risk children and families in both Head Start and Early Head Start (EHS) programs. This year, EBCAP has provided Education, Health, Mental Health, Disabilities, Nutrition, and Social Services to a total number of 258* Head Start children and 149* EHS children and pregnant women living in the cities of East Providence, Newport and the towns of Barrington, Warren, Bristol, Tiverton, Little Compton, Portsmouth, Middletown and Jamestown. Average monthly enrollment for each age group was 242 and 108 respectively. Effective September 2019, the Office of Head Start approved a reduction of 14 Head Start classroom slots which allowed EBCAP to extend classroom hours for 68 children from four to six hours a day at the Tiverton and Warren centers. **Cumulative enrollment for the months, 9/1/19-8/31/20.*

The 2020 Rhode Island Kids Count Factbook <http://www.rikidscount.org/Data-Publications/RI-Kids-Count-Factbook> estimates in the EBCAP catchment area, almost 1,400 children aged birth to three are living in poverty with only 7.6% of low income children receiving Early Head Start services, however this is higher than the state average of 5% of eligible children enrolled in Early Head Start, (page 119). Sixty-one percent of this group live in East Providence and Newport. The Factbook also reports 14% of infants/toddlers in Rhode Island benefited from Early Intervention services in 2019 (page 117). During the same period, EBCAP provided support to 29 children identified as having a special need, 19% of its cumulative EHS enrollment (2019-2020 EBCAP Enrollment Report). The Factbook also reports that over 450 low income three and four-year-old children live in the EBCAP catchment area with just over 60% of these children living in East Providence and Newport (page 131). EBCAP provided services to over 67% of the eligible 3 and 4 years olds in the east bay area (2109-2020 EBCAP Enrollment Report and State Pre-K Report). Over 18% of this group of children received special services from their local public school in partnership with EBCAP, far exceeding the 9% average of children in the state with an IEP.

On March 16, 2020 Governor Raimondo closed all child care centers in Rhode Island due to the coronavirus pandemic. While centers closed, Head Start was still here to support families and to deliver services remotely. During this unprecedented experience, our entire Head Start, Early Head Start and Pre-Kindergarten workforce pulled together to move from a classroom and homebased service to a distance learning service. Family advocates contacted families to ensure they were connected to available resources. The most vulnerable and isolated were reassured and provided with food, diapers, formula and other needed resources. Educators created activity kits and delivered them to families and provided distance learning activities and events for parents and children.

The availability of comprehensive early learning and support services during a pandemic is more vital than ever for our children. A shout out to educators and parents who worked together to promote children's school readiness skills in the areas of motor/physical development; cognition; language/literacy and math skills; social/emotional development; and approaches to learning. In-person learning in classrooms and home visits were suspended through the end of the school year and we had a concern for the slide in learning that might take place over this four-month period. We are delighted to report our employees and parents rose to the challenge and spring 2020 child development assessments show growth that exceeded spring 2019 averages.

Prior to the close of classrooms in March, all of our centers participated in the Rhode Island Bright Stars Quality Rating system with 5 out of 6 centers attaining a 4-STAR rating in the past year and our East Providence site located at 386 Willett Ave achieved the highest Bright Stars award, a 5-STAR rating. We are very proud of the employees who work at the Willett site, congratulations on this achievement!

We extend our sincere thanks to our staff, governing body, Policy Council, parents, agency leadership and community partners, you were all instrumental in supporting our early childhood education services in these unprecedented times. We also thank the Office of Head Start, Region I leadership who continue to provide support and guidance to all the programs in New England.



The Percentage of Eligible Children Enrolled in Early Head Start and Head Start/Pre-K

	Early Head Start	Head Start/Pre-K
Barrington*	0%	37%
Bristol/ Warren**	3%	75%
East Providence	4%	97%
Jamestown*	0%	0%
Little Compton*	0%	0%
Middletown	8%	67%
Newport	37%	75%
Portsmouth	0%	33%
Tiverton	2%	72%
Rhode Island	5%	60%

2020 Rhode Island Kids Count Factbook, page 131

* Community reports less than 10 low income children age 3 & 4

**Bristol/Warren Regional School District

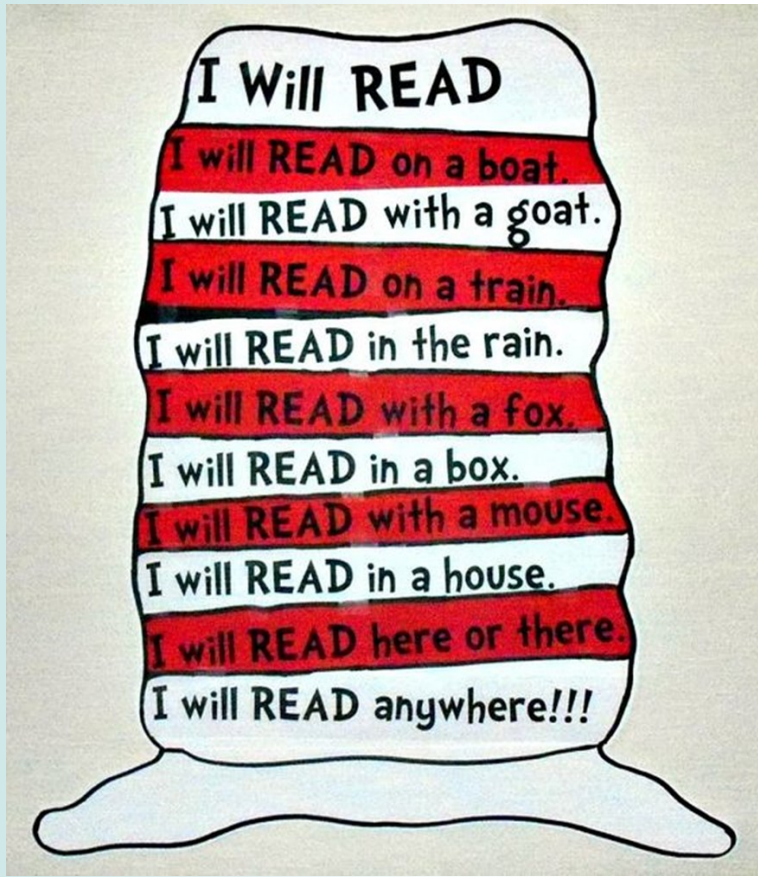
The Percentage of Children Who Received Medical and Dental Exams*

	Early Head Start	Head Start
Health Insurance	94.6%	84.1%
Up-to-Date on Preventative and Primary Care	31.5%	70.2%
Up-to-date on Immunizations	79.9%	91%
Continuous/ Accessible Dental Care	53.8%	66.4%
Up-to-date on Preventative Oral Care	22.8%	10%

*EBCAP Child Plus Data Base 9/1/19-8/31/20

State shut down due to coronavirus pandemic closed medical and dental offices for preventative care in March 2020.

School Readiness Goals



EBCAP provides high quality early childhood programming for children birth to five years old in several program options: full day preschool, extended day preschool and infant/toddler classrooms and home-based programs. Home-based services include weekly home visits and two group socialization experiences per month. Facilities are licensed and staffed by qualified early childhood professionals.

To ensure that children who participate in Head Start and Early Head Start are successful in future educational settings, EBCAP has adopted the following School Readiness Goals.

In 2019, the School Readiness Advisory Committee with the support and approval of the Policy Council, added two indicators to the language/literacy domain and added Math as a sixth domain to our school readiness goals.

1. PERCEPTUAL, PHYSICAL AND MOTOR DEVELOPMENT

Children will use senses to gather and understand information and respond to their environment.

2. COGNITION

Children will be able to connect ideas, develop logical and abstract thinking through curiosity and motivation.

3. LANGUAGE AND LITERACY

Children will be able to use receptive and expressive skills to communicate.

4. SOCIAL/EMOTIONAL DEVELOPMENT

Children will be able to express, manage, recognize and interpret their own emotions as well as respond appropriately to others' emotions.

5. APPROACHES TO LEARNING

Children will possess skills to pay attention, control impulses and think flexibly.

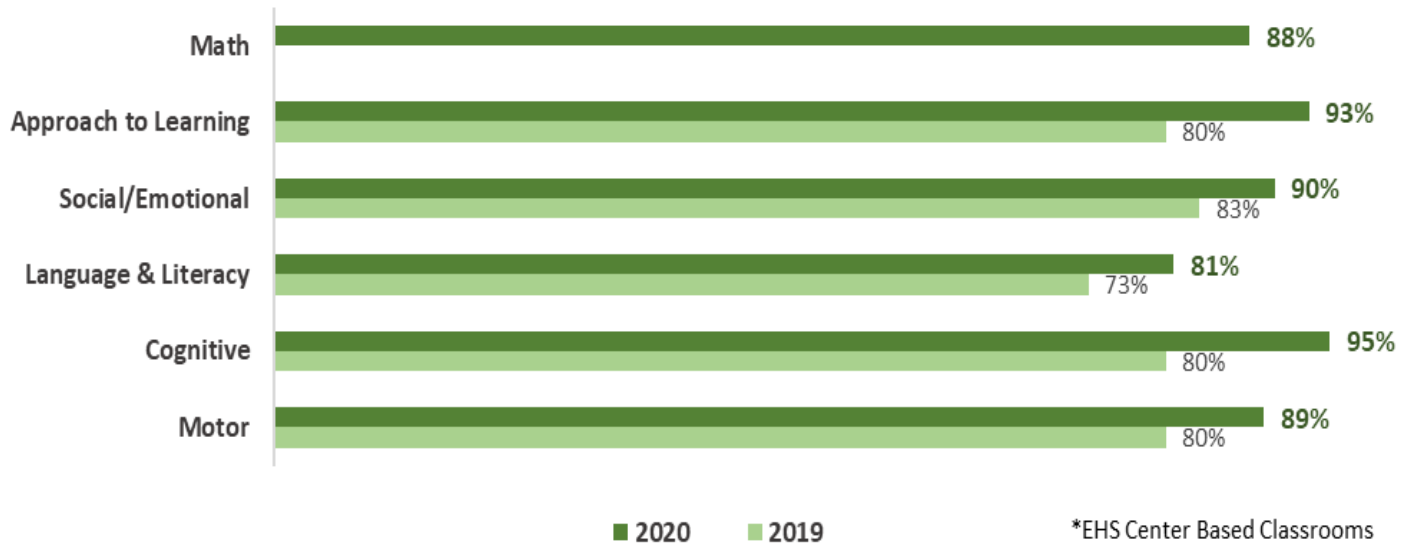
6. MATH

Children will have the knowledge of basic math concepts and will be able to use them to solve everyday problems.

Early Head Start-Infants/Toddlers*

Percentage of Children Who Meet or Exceed Age Expectations

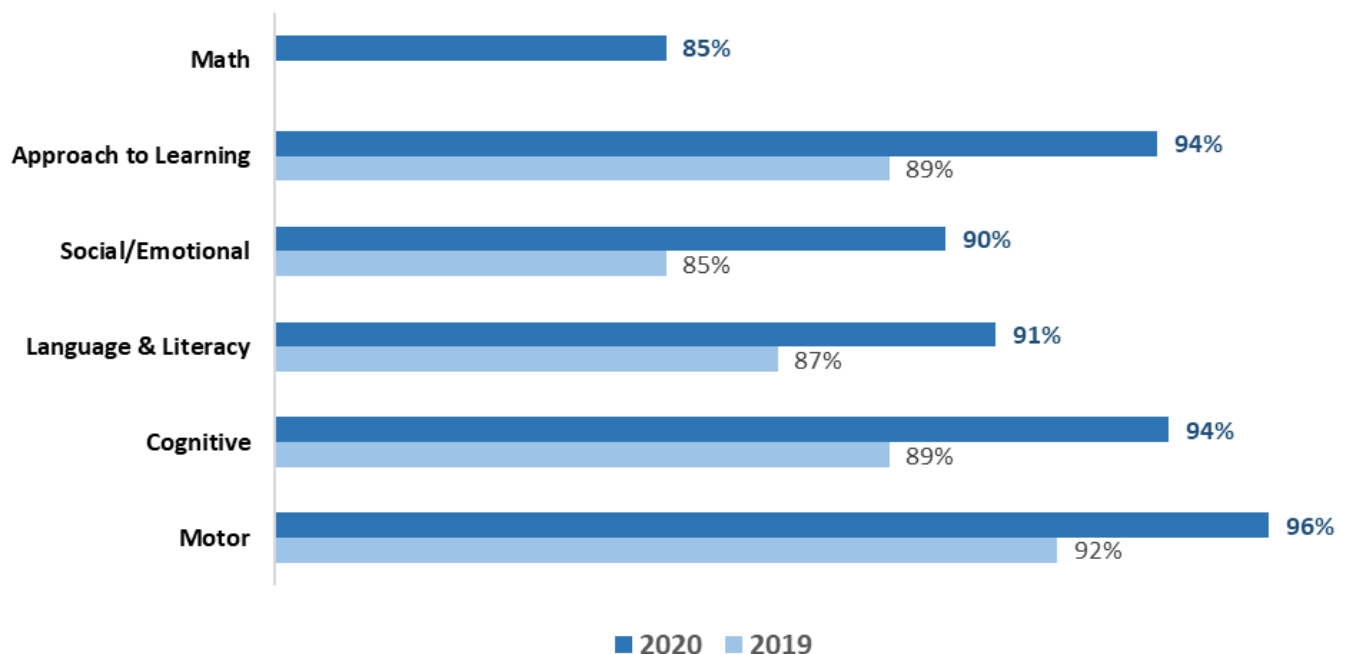
Spring 2019 (n=60) vs. Spring 2020 (n=58)





Head Start 3 & 4 Year Olds Percentage of Children Who Meet or Exceed Age Expectations

Spring 2019 (n=230) vs. Spring 2020 (n=214)

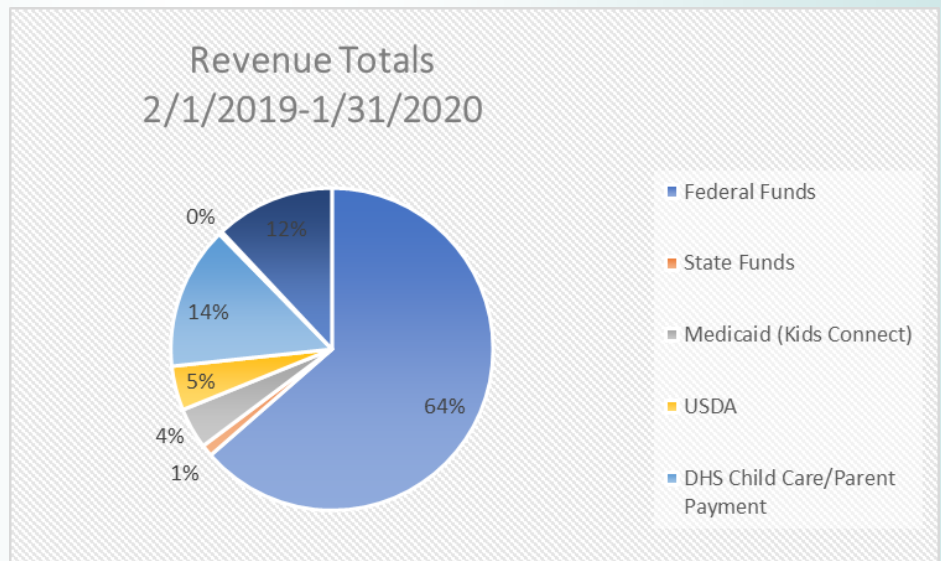


Financial Reports

EBCAP received the following sources of revenue in the grant year February 1, 2019—January 31, 2020 for a total of \$7,487,162 to operate Head Start, Early Head Start and Child Care programs. Federal funds include a 1.77% increase which subsidized a 2% cost of living increase. Salary and fringe benefits make up 63% of the total annual expenses.

In-kind revenue is calculated as the value of goods, services, property value, donations and volunteer time needed to support program operations. EBCAP requested and received a waiver in the amount of \$291,633 of the required 20% match of federal funds.

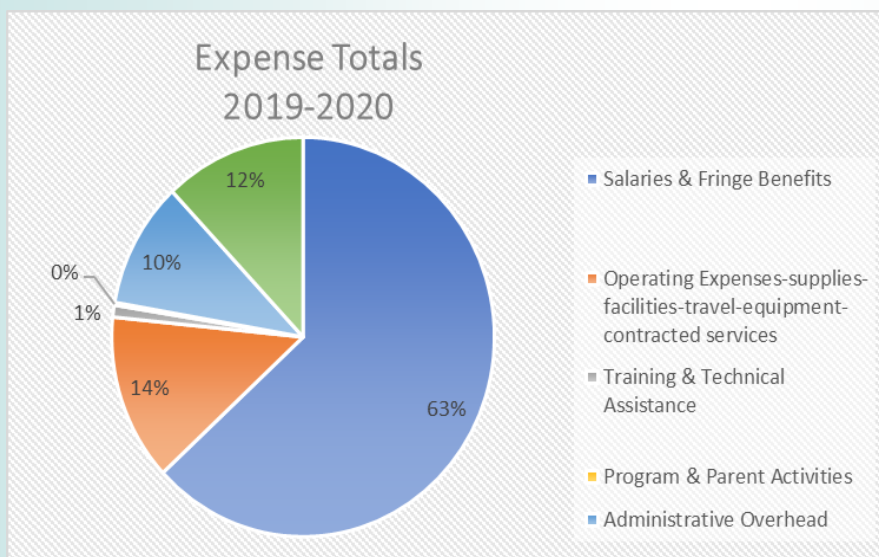
Results of the annual audit was reported to the Policy Council and the Board of Directors as an unqualified opinion-clean report.



Federal Funds	\$	4,760,372
State Funds	\$	88,574
Medicaid (Kids Connect)	\$	307,227
USDA	\$	333,467
DHS Child Care/Parent Payment	\$	1,073,779
Other grants, income, donations, E-Rate	\$	25,283
In-kind Revenue	\$	898,460

Salaries & Fringe Benefits 4,724,661

Operating Expenses-supplies-facilities-travel-equipment-contracted services 1,010,065



Training & Technical Assistance 72,253

Program & Parent Activities 13,808

Administrative Overhead 765,725

In-Kind Expense 898,460

Expense Totals 7,487,161



Proposed budget for Grant Year 2020-2021

Revenue

Federal/State/Private Grants	\$5,066,592
Program Income	\$1,774,976
Donations/Misc. Income	\$40,500
Total Revenue	\$6,882,068

Expenses

Salaries/Fringe/Contracted Services	\$5,016,021
Supplies	\$387,630
Facilities	\$521,747
Equipment	\$26,400
Training/Technical Assistance/Tuition	\$72,177
Travel	\$33,000
Parent Activities	\$15,625
General Administrative	\$809,469

Proposed in-kind revenue and expenses for 2020-2021 is \$1,190,094.
EBCAP asked for a waiver for COLA/Quality in-kind share for 2020-21.

Thank you to the members of our 2019-2020 Policy Council

Nakisha Wright,
Chairperson/Parent

Sonya Moitoza,
Vice Chairperson/Parent

Annette Richardson,
Treasurer
Board of Directors/Head Start Liaison

Danielle Riley, Parent

Danielle Sylvia, Parent

Roberta Pina, Parent

Mark Simoes,
Community Representative





East Bay Community Action Program

Head Start and Early Head Start

**For information about enrollment or employment opportunities,
visit www.ebcap.org**